



# **PBS HAWAII**

---

**Fiscal Year 2016 Local Content and  
Service Report To The Community**

---



**PBS HAWAII**

Local Content Report

Fiscal Year 2016



**PBS HAWAII**

315 Sand Island Access Rd.  
Honolulu, HI 96819-2295

p: 808.462.5000  
f: 808.462.5090

[pbshawaii.org](http://pbshawaii.org)

Dear Viewers and Supporters,

2017 finds us beginning the first full year of occupancy in our new home, built by and for the people of Hawai'i.

Inside the curving building at Nimitz Highway and Sand Island Access Road, the workspace is open, transparent, cheerful, with a lot of natural light—and lends itself to a more inclusive and more efficient working style.

***"We shape our buildings, and afterward, our buildings shape us." -Winston Churchill***

Gone are the rows of small offices and cubicles that we occupied in our former leased facility in Manoa, constructed in 1972. All of this new open space means that meetings are generally held in sight of others. This has led to more interdepartmental and other collaborative gatherings, and better information flow across the organization.

The two-story, 30,000+ square feet of flexible workspace, including three multimedia studios and new technology, will see us through rapidly changing times and through future generations.

PBS Hawai'i's tagline, "Home is Here," refers to more than a beautiful new building. It represents an intentional alignment of mind and heart in storytelling, and it means serving Hawai'i Nei as a rare locally owned nonprofit media enterprise. While continuing to bring the world to Hawai'i, we aim to be more local, more inclusive and more interactive. We relish presenting youth voices in HIKI NŌ, the nation's first statewide student news network, demonstrating 21<sup>st</sup>-century workforce skills and sharing different perspectives on life in these Islands.

We are in the process of using research-driven strategic planning to guide us in designing and distributing content to all of the "screens" in people's lives. Our methods continue to evolve, but our embrace of foundational values, such as fairness, accuracy and quality, remains strong.

For your review, we offer this summary of PBS Hawai'i content and activities offering universal access to lifelong learning.

With warmest aloha and mahalo,

Robbie Alm,  
Chair, Board of Directors

Leslie Wilcox  
President and CEO



# Table of Contents

---

4 – PBS Hawai'i: What Drives Us

5 – PBS Hawai'i at a Glance

## **Stories of Impact**

10 – HIKI NŌ

14 – Insights on PBS Hawai'i

16 – Na Mele

17 – Long Story Short with Leslie Wilcox

19 – PBS Hawai'i Presents

22 – Pacific Heartbeat – National Series

25 – Family Ingredients – National Series

26 – PBS Hawai'i Specials

28 – PBS KIDS – A Safe Haven for Hawai'i's Children

30 – Bringing PBS Hawai'i to Local Communities

33 – Progress in Engineering

35 – Statewide Board of Directors

36 – Statewide Community Advisory Board

37 – PBS Hawai'i Management

38 – Foundation Supporters

39 – Business Supporters

40 – Financial Snapshot

41 – Programming on PBS Hawai'i





*After a multi-year capital campaign, PBS Hawai'i moved into The Clarence T.C. Ching Campus in the Kalihi area of Honolulu in May 2016.*



## **PBS Hawai'i**

### **What Drives Us**

---

#### **Our Mission**

---

PBS Hawai'i advances learning and discovery with storytelling that profoundly touches lives.

---

#### **Our Vision**

---

PBS Hawai'i is a digital touchstone for island communities, connecting and convening Hawai'i's citizens of all ages in civil discourse, appreciation of culture and the arts, lessons of history and in shaping Hawai'i's future.

---

#### **Our Values**

---

In our ethnically and culturally diverse island state, we are committed to upholding Hawai'i's universal values:

**Pono** - rightness and balance

**'Imi na'auao** - knowledge and wisdom

**Aloha kekahi i kekahi** - respecting the dignity of others

**Kulia i ka nu'u** - strive for excellence

**Kuleana** - responsibility for the collective good

**Lokahi** - collaboration and unity

**Malama** - protect and care for



## PBS Hawai'i at a Glance

---

### Locally Owned, Educational Broadcaster

---

PBS Hawai'i is the *only* locally owned statewide television station in Hawai'i. We are a nonprofit multimedia organization dedicated to education. We are the *only* federally licensed statewide educational broadcaster in the Islands and the *only* Hawai'i member of the trusted Public Broadcasting Service (PBS).

---

### Lead with Our Mission

---

We advance learning and discovery with storytelling that profoundly touches lives.

---

### The Widest Reach

---

PBS Hawai'i's free over-the-air transmission reaches farther than that of any other television broadcaster. With broadcast transmitters on O'ahu and Maui, along with 12 translators on Kaua'i and Hawai'i Island, our broadcasting system provides no-cost broadcast service to six populated islands, including all 25 of the most financially disadvantaged areas in Hawai'i, as identified by the 2012 U.S. Census. In some of these areas, we are the *only* available broadcaster. With on-line and live streaming delivery of locally produced programs, we're also reaching the world with stories of Hawai'i.

---

### By the Numbers

---

35 – Full-Time Staff  
2 – Part-Time Staff  
10 – Production Students  
27 – Board Members  
10 – Community Advisory Board Members  
98 – Volunteers  
1,092.25 – Volunteer Hours  
471 – Volunteer Days  
14,419 – Donors

*Open, common areas, like the second-floor community courtyard in our new home, give us space to host events that serve our community through storytelling and education.*



## Local Value

In Hawai'i, where local media outlets have consolidated and mainland owners are the norm, PBS Hawai'i is the only state-wide locally owned broadcaster – a rare, independent voice. Through educational, cultural, public affairs and arts programming, produced under discerning standards, we are dedicated to helping Hawai'i's people maximize their potential.

PBS Hawai'i is the largest noncommercial, community-supported television broadcaster in Hawai'i, with the farthest over-the-air reach across the island chain. The only Hawai'i member of the trusted Public Broadcasting Service (PBS), we reach a multitude of underserved communities, from Koloa on Kaua'i, to Ka'u on Hawai'i Island. In some of these communities, PBS Hawai'i is the only broadcaster people can access.

This year, communities on six islands came together to invest in our new home. Our \$30 million capital campaign was successfully completed, as was construction of our new home, The Clarence T.C. Ching Campus – finished on time and on budget. PBS Hawai'i looks forward to returning the investment that our island communities chose to place in us. With upgrades in technical equipment and space, our new home will allow us to serve our communities in new and different ways.



Pictured right:

*PBS Hawai'i offers a media safe haven for Hawai'i's children and their caregivers.*



---

## 2016 Key Services

---

In 2016, PBS Hawai'i provided vital local services to our island communities, including:

- Giving students from diverse neighborhoods across our island chain statewide and global platforms to tell stories from their communities
- Hosting a weekly public affairs forum which is televised live and streamed live, at which the exchange of diverse viewpoints can yield understanding, while viewers statewide phone, email and tweet questions and comments
- Honoring and perpetuating the music and language of Hawai'i's host culture
- Showcasing the work of independent filmmakers, whose films present multicultural and diverse perspectives on historical and modern-day social issues
- Co-presenting stories from Hawai'i and other Pacific Islands to a national audience
- Offering a 24/7 media safe haven for children, with fun, curriculum-based programs
- Creating memorable, face-to-face experiences for viewers of various ages and backgrounds, through film screenings, meet-and-greets, children's events and other live events in our communities





Pictured right:

*Homeless student Lorenzo Taguro-Bear was the focus of a 2016 HIKI NŌ story from Wai'anae Intermediate School on Leeward O'ahu. The story presented a youth perspective on homelessness, which continues to be a hotly discussed topic in Hawai'i.*



---

## Local Impact

---

PBS Hawai'i's mission and vision, and the values informed by our Hawaiian host culture, drive everything we do. Here are several examples of how we've made an impact in our island communities:

- The number of participating schools in our statewide digital learning initiative, **HIKI NŌ**, grew from 55 schools in the program's launch in 2011, to 90 in 2016 – a nearly 40 percent participation increase over five years. Anecdotally, students say that the program has taught them how to think critically, work in teams and persevere. Teachers from these schools also receive free professional development from PBS Hawai'i and our network of “mentors” – local media professionals who work with each school's teacher and student team on their stories.
- A three-minute HIKI NŌ student video story from Wai'anae Intermediate School about a homeless student on O'ahu's Leeward Coast garnered 121,890 unique viewers and 15,487 post engagements on Facebook. It is PBS Hawai'i's most-viewed online video to date. The story sparked discussion and shined new light on a different perspective on homelessness in Hawai'i – the youth perspective. *(Source: Facebook)*



Pictured right:

*Buddy, a service dog, was on set during an Insights discussion about service animals and comfort animals.*



## Local Impact

- Our viewership for our live, weekly public affairs discussion program, **Insights on PBS Hawai'i**, is above average among lower-income households. About 65% of Insights viewers are from the \$50,000 - \$75,000 household income bracket. (Source: Scarborough)
- About 35% of the local broadcast audience for our weekly film showcase, **PBS Hawai'i Presents**, are from household incomes of less than \$35,000 a year. (Sources: Scarborough, U.S. Census)
- A short documentary that was showcased on PBS Hawai'i Presents, **A Place in the Middle**, followed Ho'onani, an 11-year-old girl who dreamed of leading her school's boys-only hula halau. The film also featured her teacher, Hina Wong-Kalu, who was also the subject of the 2014 film **Kumu Hina**, which debuted on PBS Hawai'i Presents and later aired nationally on **Independent Lens**. A Place in the Middle picked up 20,840 views on PBS Hawai'i's YouTube, one of our highest-ever viewed videos on the platform. The community saw a local example of the modern-day transgender experience, and learned of the Hawaiian cultural tradition of respecting mahu — individuals who embody both masculine and feminine spirits. (Source: YouTube)

**Pictured right:**

*Media teacher Luane Higuchi, standing, oversees her Waiʻanae Intermediate students as they work on their HIKI NŌ projects.*



## Stories of Impact

# HIKI NŌ

PBS Hawaiʻi's flagship educational initiative, HIKI NŌ (Hawaiian for the phrase "can do"), is the only statewide digital literacy and learning initiative of its kind in the U.S. Students from 90 participating public, private and charter schools contribute to the eponymous weekly, half-hour newsmagazine show.

---

### Bridging the Gaps

---

With serious cuts to public education budgets, the gap between Hawaiʻi's "haves" and "have nots" has been widening. HIKI NŌ bridges these educational and social gaps, with its network of participating schools, teachers and mentors — professionals in the local media industry.

Students from diverse neighborhoods across the Islands also have a statewide broadcast platform and online global reach to share their regional stories. Their communities and stories may rarely be heard in commercial media. Students bring depth and clarity to some of the most pressing issues of our time: homelessness, discrimination, people's struggles with disabilities and the disappearance of longtime lifestyles that shaped modern-day Hawaiʻi, such as sugar plantation camps. Students' belief in having a moral compass was addressed in a series of HIKI NŌ episodes illustrating key Hawaiian values.

**Pictured right:**

*HIKI NŌ Festival events across four islands helped celebrate students' work in their home communities.*

**Pictured far right:**

*Students from Wai'anae Intermediate School on Leeward O'ahu work on their HIKI NŌ story inside PBS Hawai'i's new home.*



## Bridging the Gaps

***“[Creating a HIKI NŌ video story] really was, in a way, taking all of the information from every single suggestion [from mentors], and putting it together to mesh it into something that worked and actually attended to all of our different viewpoints.”***

*Arron Nie, Kalani High School student*

The development of a HIKI NŌ curriculum, which would create an official elective class available for all Hawai'i middle and high school students, made great strides in 2016. A draft of the curriculum was created and field-tested by eight HIKI NŌ schools. Feedback from the field-test teachers will be used to revise the curriculum into a final form. DOE officials have agreed to shepherd our curriculum developers, with the goal of creating an official HIKI NŌ elective class by the 2017-18 school year.

Thanks to the completion of PBS Hawai'i's new home, which includes the Harry and Jeanette Weinberg Learning Zone, PBS Hawai'i has a new gathering place for students and teachers in HIKI NŌ. Here, they can hone their digital storytelling skills, participate in workshop projects and network with each other. The launch of the Learning Zone marks a new era of collaboration and community involvement for HIKI NŌ and PBS Hawai'i.



**Pictured right:**

*Last year, PBS Hawai'i hosted a conference for teachers who participate in our HIKI NŌ statewide digital learning initiative. About 60 teachers from across the Islands attended this free professional development event.*



---

**Empowering Teachers**

This was a breakthrough year for teacher empowerment within the HIKI NŌ program. In previous years, teachers followed the instructions of professional television producers who led HIKI NŌ stories from rough-cut version to rough-cut version with explicit feedback. Today, teachers who have received PBS Hawai'i's free digital media and journalism training are overseeing the story revision process. Professional mentors provide guidance to the teachers as needed. Teachers make recommendations to students on how to improve their stories to meet PBS journalism and production standards. This teacher empowerment signals a major step forward in sustaining HIKI NŌ into the future. The more teachers gain experience and skills in digital storytelling, the stronger HIKI NŌ will be as a course of study in Hawai'i schools.

---

**Accolades**

For the second year in a row, the season's best HIKI NŌ stories were showcased in public venues at the 2015 HIKI NŌ Festival. Stories and vignettes nominated for the 2015 HIKI NŌ Awards screened in theaters on Maui, Kona, Hilo, O'ahu and an outdoor venue on Kaua'i. The nominated students walked the red carpet and received public accolades for outstanding work in their home communities.

In March 2016, students from 15 Hawai'i schools, all in the HIKI NŌ program, competed against other students from states including California, New York and Florida at the annual Student Television Network Convention in Atlanta, Georgia. Hawai'i schools took home 34 awards, including 14 first-place trophies.

HIKI NŌ is a recipient of the America's Public Television Stations' (APTS) EDGE Award for Innovation (2012).





**Pictured right:**

*Students from Chiefess Kamakahelei Middle School on Kaua'i shoot on location in Atlanta for a video project during the Student Television Network Convention.*



## HIKI NŌ: By the Numbers

- 4,850** Students statewide who benefitted from HIKI NŌ training
- 1,110** Students statewide who worked on HIKI NŌ stories
- 52%** of students who worked on HIKI NŌ stories were from Title I schools
- 123** Stories produced and aired
- 750** Participating students
- 100** Participating teachers
- 35** Communities highlighted in host segments
- 6** Islands represented
- 90** Participating Schools
  - 59** Public
  - 9** Charter
  - 22** Private



**Pictured right:**

*Daryl Huff, left, moderated a discussion on Insights on PBS Hawai'i about facing mortality. Guests Kirk Matthews, Christa Wittmier and Daniel Gray candidly talked about their struggles with life-threatening illnesses.*



## **Stories of Impact**

# **Insights on PBS Hawai'i**

**Insights on PBS Hawai'i** is Hawai'i's only live, primetime, weekly televised community affairs program that gives the entire state the opportunity to engage in discussions affecting all of Hawai'i. It is a forum in which diverse viewpoints can yield understanding.

Last year, Insights on PBS Hawai'i tackled controversial and relevant issues, always with the interest and concern of the community at heart. Viewers were as engaged as ever, as they submitted questions and comments through phone calls, email and social media. As always, Insights on PBS Hawai'i provided a safe space for critical analysis and civil conversation.

While they circulated persistently in the local media, urgent issues like dengue fever, the future of Hawaiian Electric Company and the consequences of Kaka'ako's building boom were analyzed and discussed with acuity and depth at the Insights table, with qualified guests offering new and astute perspectives to the discussion.



Pictured right:

*Insights hosted a discussion about medical marijuana in April 2016.*

Pictured far right:

*A jovial moment during a discussion on real estate between real estate broker Stephany Sofos and Locations Executive Vice President Scott Higashi.*



## Insights on PBS Hawai'i

- Along with airing the film **A Place in the Middle** on **PBS Hawai'i Presents**, Insights on PBS Hawai'i hosted an important discussion on how our community can better understand gender diversity in Hawai'i. In 2015, the Hawai'i Chapter of the Society of Professional Journalists named this episode a finalist in its Excellence in Journalism Awards, in the category Television Series Reporting/Documentary/Special News.
- Inspired by the PBS Hawai'i concert special **Jimmy Borges: Faced It All**, Insights hosted a candid conversation with individuals living with life-threatening illnesses. The sensitive topic, moderated by Daryl Huff, was approached with unflinching honesty and compassion. Guests included the late Kirk Matthews, a former news anchor who discussed his struggle with stage four lung cancer. In a follow-up episode, host Malia Mattoch spoke with the caregivers who provide support to those suffering from life-threatening illness and the monumental role they serve.
- A deep, multi-episodic investigation into Hawai'i's homelessness issues looked at the challenges homeless children face and how they can break the cycle, how people have worked their way out of homelessness and the innovative ways the community is addressing the issue.
- As a tie-in with Father's Day, Insights looked into the impact on children growing up without an involved father, bringing together a diverse panel, including an eighth grader finding support in her community and her faith after the death of her father.

Guests and topics are selected in the public interest, with particular thought given to subjects that may not get covered in-depth on commercial media.



Pictured right:

*Kupu Dalire-Na'auao, Kahi Lum-Young and Kekoa Kane comprise music trio Hū'ewa, shown here with hula dancers M. Kapua Dalire-Moe, Shelby Meador and Leilani Wilson.*



## Stories of Impact

### Na Mele

Last year, PBS Hawai'i added new performances to the **Na Mele** archives. Musicians welcomed PBS Hawai'i with open arms into their homes to join them for kani ka pila, and talented artists transformed our studio into a concert venue.

- PBS Hawai'i paid tribute to the talented Kaapana family with two special episodes: **Ledward Kaapana and Family** and **More! Ledward Kaapana and Family**. Recorded in the slack key master's garage in Kane'ohe, these episodes show Ledward and his sisters Lei Aken, Lehua Nash and Rhoda Kekona where they are most at ease — with live music, friends, potluck food and laughter. Viewers delighted in the intimate and local-style kani ka pila format that harkens back to simpler times.
- Along with honoring some of the living legends in Hawaiian music, PBS Hawai'i also welcomed young award-winning music group **Hū'ewa** to the Na Mele stage. The band — comprised of 17-year-old Kupu Dalire-Na'auao, 19-year-old Kahi Lum-Young and 25-year-old Kekoa Kane — gave fresh perspective to classic Hawaiian music. "'Hū' is to hum or to make sound, to make music. And 'ewa' is to go off course or to find your own path," explained Hū'ewa member Kane. "That's what we do with our music...we make music on our own path, on a different style."





Pictured right:

*Host Leslie Wilcox with local filmmaker  
Heather Haunani Giugni*



## Stories of Impact

# Long Story Short with Leslie Wilcox

---

Long Story Short with Leslie Wilcox provides long-form and in-depth interviews with some of the community's most intriguing individuals, from Hawai'i and beyond. This past year, PBS Hawai'i President and CEO Leslie Wilcox sat down with a variety of guests to talk story about their life experiences.

- Karen Radius relayed her tales of working for decades in Family Court as a judge. Her ambition to find innovative solutions to support Hawai'i's troubled youth came to fruition with the creation of Girls Court, a program designed specifically for at-risk girls on O'ahu.
- The conversation with master navigator and community leader Nainoa Thompson took place in Niu Valley, where Thompson grew up and which he still calls home. Thompson spoke openly about the teaching power of fear, his ever-growing sense of community and his focus on the global voyage of the Polynesian canoe, Hōkūle'a.
- Kalihi-born-and-raised tech evangelist, prolific author and social media maven Guy Kawasaki stopped by while in Honolulu for the funeral of his father, former state senator Duke Kawasaki. In his interview, he speaks about his Hawai'i roots and how his early experiences in the islands helped shape his journey to success.

Pictured right:

*Cleaning industry consultant Rose Galera*

Pictured far right:

*Master navigator Nainoa Thompson*



## Long Story Short with Leslie Wilcox

- Henk Rogers is well known for his contributions to the video gaming industry – most notably, his involvement with Tetris, one of the world’s top selling video games. The visionary, entrepreneur and philanthropist now seeks to make Hawai‘i a global model for energy independence with his non-profit, Blue Planet Foundation.
- Sabra Kauka strives to honor the place Hawaiian values have in our modern world. As a cultural practitioner and teacher on Kaua‘i, she helps sustain and perpetuate Native Hawaiian traditions by sharing her knowledge with future generations. Kauka shared her stories as a freelance photographer in Alaska and how after many years, she eventually found her way back to the islands.
- Phil Arnone has built a career on telling Hawai‘i’s stories as a television director and producer. Revered for his passion and professionalism, he has directed Hawai‘i’s number one local newscast, produced a popular kids show and now produces in-depth documentaries that explore some of Hawai‘i’s most important places and people.
- Rose Galera approaches cleaning as both a science and an art. As a former Waikiki hotel executive housekeeper and now an industry consultant, Galera’s career in what she deems “cleanology” made her more than qualified to offer many useful cleaning tips and reminders to Long Story Short viewers.
- Filmmaker Heather Haunani Giugni described her unique experience of growing up between the two contrasting worlds of Hawai‘i and 1960s Washington, D.C. She also discussed her visionary project ‘Ulu‘ulu, the Henry Ku‘ualoha Giugni Moving Image Archive at the University of Hawai‘i – West O‘ahu, and her local series Family Ingredients, which aired on PBS stations nationwide.



Pictured right:

*The Land of Eb*



## Stories of Impact

# PBS Hawai'i Presents

**PBS Hawai'i Presents**, our showcase for independent films and filmmakers, offers thoughtful and informed perspectives about Hawai'i's history and culture, and provides a platform for multiethnic and multicultural storytelling.

This year, many of our films acknowledged and empowered voices from marginalized subcultures within Hawai'i, including the early Japanese immigrants who worked in the sugarcane fields; the mahu, the Hawaiian embodiment of both masculine and feminine spirits; and those displaced by nuclear testing.

---

### The Land of Eb

---

**The Land of Eb** is an intimate, fictional story about Jacob (portrayed by actor Jonithen Jackson), a settler from the Marshall Islands, who struggles to provide for his large family. When he is diagnosed with a terminal illness, he is compelled to record his story, and that of his people, the Marshallese, using a small video camera. The film helped spark conversation about the many families and communities uprooted from their homes due to the U.S. nuclear testing in the Marshall Islands and Chuuk, and the obstacles they face in their search for a better life and opportunities in Hawai'i.



Pictured right:

*'ike: Knowledge is Everywhere*



## Haleakala: A Trek For Dignity

**Haleakala: A Trek For Dignity**, by longtime Maui filmmaker Tom Vendetti, follows mental health advocates, including those diagnosed with mental illness, as they trek from the summit of Haleakala on Maui to sea level. Their journey is an effort to demonstrate that those with mental illness are capable of extraordinary achievements, and to end the stigma and prejudice associated with having mental illness. The independent short film is directed by fellow Maui resident Don Lane, diagnosed with bipolar disorder.

## 'ike: Knowledge is Everywhere

**'ike: Knowledge is Everywhere** looks at Hawai'i innovators who have found ways to improve learning and life for young students. The documentary by filmmaker Matthew Nagato shares stories of trailblazers in Hawai'i who are creating and implementing creative programs to improve public education.

## A Place in the Middle

**A Place in the Middle** follows sixth-grade student Ho'onani, who dreams of leading the boys-only hula troupe at her school in Honolulu. She's fortunate that her teacher, Kumu Hina, understands first-hand what it is like to be "in the middle" of kane and wahine, and the Hawaiian philosophy of valuing and respecting mahu — those who embody both masculine and feminine spirits. The short film explores the preservation of Hawaiian cultural traditions and understandings in modern-day society.





Pictured right:

*Canefield Songs: Holehole Bushi*



---

### **Canefield Songs: Holehole Bushi**

---

**Canefield Songs: Holehole Bushi** takes an investigative and thoughtful look at the Japanese immigrants who worked in Hawai'i's sugarcane fields in the late 19th and early 20th centuries. Through their canefield songs, or holehole bushi, these women sang about their joys and sorrows in trying to start life in a new world. This Hawai'i-produced documentary, presented by filmmakers Christopher Conybeare and Joy Chong-Stannard, with historian Dr. Franklin Odo, tells the story of music teacher Harry Urata and his efforts to preserve and perpetuate these musical oral histories.

---

### **The Paho Flow**

---

**The Paho Flow** documents the 2014 Kilauea lava flow that threatened Ka'ohe Homesteads on Hawai'i Island. Told through the perspective of locals Josh Ballauer, Jeremiah Lofgreen and Matt Tavares, the film focuses on how the community came together in the face of the crisis and found camaraderie.



Pictured right:

*Nanakuli High and Intermediate School students with advisor Robin Kitsu, far right*



## Stories of Impact

# Pacific Heartbeat — National Series

For a fifth season, PBS Hawai'i proudly partnered with Pacific Islanders in Communications to present a national series of authentic stories of Hawai'i and the Pacific Islands called **Pacific Heartbeat**.

Pacific Heartbeat brings the people, cultures, languages, music and issues of the Pacific to the national public television audience. The five films in this season highlight struggles, values and victories that draw us together and make our Pacific cultures unique.

### Dream Big: Nanakuli at the Fringe

This PBS Hawai'i-produced documentary follows the students of Nanakuli High and Intermediate School Performing Arts Center on O'ahu, who were given a once-in-a-lifetime opportunity to travel halfway across the globe to perform at The Fringe Festival in Edinburgh, Scotland. The experience abroad proves life-changing for the students, who are dealing with adversities at home.



Pictured right:

*Splinters*



---

## Splinters

---

In the 1980s, an intrepid Australian pilot left behind a surfboard in the seaside village of Vanimu, Papua New Guinea. Twenty years later, surfing is not only a pillar of village life, it's also a means to prestige. This story unfolds in the months leading up to the first National Surf Championships in Papua New Guinea and explores the hopes and dreams of the surfers, and how surfing has led to societal changes in a male-dominated culture.

---

## Waiting for John

---

If you had never heard of an airplane or a refrigerator, would you think it was a miracle when one arrived? When the American military landed on a remote island in the South Pacific during World War II, the islanders were amazed by America's fantastic cargo. The John Frum Movement was born: a unique religion now considered the last surviving "cargo cult." The program explores the history and last vestiges of this extraordinary religion, and in the process asks, where do our prophets come from? And what makes people believe?

---

## A Place to Call Home

---

In New Zealand, the government is about to sell off a third of its publicly owned state houses. Two women are at odds over a plan to rebuild a community with houses taken from the other. This story explores what can become of a new Maori approach to social housing that is separate from the state, and what becomes of a community that no longer has social housing.





**Pictured right:**

*Hawaiian cultural practitioner Pilipo Solatorio,  
featured on Sons of Halawa*



---

## **Sons of Halawa**

---

Pilipo Solatorio of Moloka'i is the last to hold the cultural traditions, music and stories of a sacred valley that has been home to his family for hundreds of years. This is an intimate portrait of Solatorio's search for a successor – before generations of knowledge are lost forever.

---

We at PBS Hawai'i look forward to a continued partnership with Pacific Islanders in Communications through Pacific Heartbeat, bringing stories of the Pacific to the public television audience here in Hawai'i and across the nation.



Pictured right:

*Restaurateur Ed Kenney with his mother,  
Beverly Noa*



## Stories of Impact

# Family Ingredients— National Series

---

With National Minority Consortium public media partner, Pacific Islanders in Communications, PBS Hawai'i helped fund and present the nationally distributed series, **Family Ingredients**. The show blends food, travel and genealogy together for a series that is as entertaining and informative as it is mouthwatering. Acclaimed Hawai'i restaurateur Ed Kenney hosts the program, tracing Hawai'i's rich, multi-cultural history of food to its origins.

Each episode, Kenney reaches out to a friend, and together, they take a closer look at favorite family recipes, often traveling the globe to trace these recipes to their roots. What results is a deeper understanding and appreciation for the ingredients that define us as individuals and comprise the building blocks of our families and communities. At the tail end of FY16, Family Ingredients premiered on PBS Hawai'i, followed by a national rollout on PBS stations across the country.

Pictured right:

*Jazz vocalist Jimmy Borges*



## Stories of Impact

# PBS Hawai'i Specials

---

In December 2015, Jimmy Borges, one of Hawai'i's most beloved performers, told a small studio audience of hand-picked friends that he was "in the process of learning how to die." The program that resulted from that special night, **Jimmy Borges: Faced It All**, was the last program taped in PBS Hawai'i's Dole Street studio in Manoa. The concert marked Jimmy's first public disclosure of the recurrence of liver cancer, which had then spread to his lungs. We at PBS Hawai'i were beyond honored to present this gift of a program from a former PBS Hawai'i Board member and musical icon.

Friends of the local jazz vocalist raised more than \$300,000 for a vocal music scholarship fund bearing his name at the University of Hawai'i at Manoa. The needs-based scholarship will benefit Hawai'i high school graduates.

Borges was thrilled with this legacy fund and hoped the vocal music scholarship would encourage Hawai'i teens to pursue their dreams, just as he has done during his successful 60-year music career. "There's no such thing as a stop sign," Borges said. "Just speed bumps."

Although the mood that night was heavy with the weight of this news, Borges made it clear that it was a time of celebration, not mourning. Between songs, he shared funny anecdotes and heartfelt insights, and embraced the opportunity to have a frank and compassionate conversation about death.



Pictured right:

*Champion wrestler Teshya Alo*



Borges passed away in May 2016 at the age of 80. This special and the resulting scholarship memorializes his talent, his passion and his generous heart.

**Olympic Quest: Teshya and Clarissa** was a timely presentation from PBS Hawai'i featuring two Olympic hopefuls from Hawai'i, Teshya Alo and Clarissa Chun, just before they competed at the Olympic trials in Iowa City, Iowa. It was Alo's first shot at Olympic gold, at age 18. Chun, a bronze medalist who is now 34, told PBS Hawai'i it was her final shot at the Olympics. Chun recalls her experiences in wrestling, a sport that she calls "fun but gruesome," and talks about feeling the effects of aging as an athlete.

Filmmaker Kimberlee Bassford's documentary, **Winning Girl**, was included in the special, and featured Alo in her teen years. The film follows Alo around the world, as she faces other top young female athletes in judo and wrestling.



Pictured right:

*Nature Cat*



## Stories of Impact

# PBS KIDS — A Safe Haven for Hawai'i's Children

PBS Hawai'i is the only local member of the trusted Public Broadcasting Service. Because of this, we are able to offer a dedicated children's channel that parents and caregivers count on as a safe place for their keiki around the clock. In addition, daytime children's programming on our main channel is free over-the-air, so even families without cable service can access educational programs for their kids.

PBS is America's largest classroom, and the undisputed leader in children's programming. According to an independent study by CARAVAN ORC International, PBS KIDS was deemed the number-one educational media brand for children.

### Two New Science Series for Kids

Two new children's shows debuted last year, both designed to introduce and engage children with Science, Technology, Engineering and Math (STEM):

- **Nature Cat**, which premiered on January 18, 2016, encourages children ages 3-8 to go outside and explore their world. Like many of today's kids, Nature Cat is enthusiastic about outside activities, but is at times intimidated by them. With the help of his animal friends, Nature Cat embarks on outdoor adventures and learns about the natural world around him.
- **Ready Jet Go!**, which premiered on February 15, 2016, is an earth science and astronomy series designed for children ages 3-8. They explore the solar system and the effects it has on the science of our planet, while learning about friendship and teamwork.

Pictured right:

*Ready Jet Go!*



## PBS KIDS By the Numbers

- 7 — literacy series
- 11 — social and emotional development series
- 9 — STEM (Science, Technology, Engineering and Math) series
- 90% — of American adults surveyed said PBS KIDS models positive social and emotional behaviors for children.\*
- 89% — of American adults surveyed said PBS KIDS helps prepare children for success in school and life.\*
- 92% — of American adults surveyed said PBS KIDS helps children learn reading, math and social skills.\*
- 71% — of American kids ages 2-8 watch PBS.\*\*

PBS stations reach more kids age 2-5, more moms with young children and more children from low-income families than any other kids TV network.\*\*

\*Source: Survey Sampling International (SSI), January 2016

\*\*Source: Nielsen NPower, 9/22/2014-9/20/2014



Pictured right:

*Sesame Street Live pre-show party*



## Stories of Impact

# Bringing PBS Hawai'i to Local Communities

---

**Sesame Street Live  
(July 11, 2015- Oahu;  
July 25, 2015-Maui)**

---

PBS Hawai'i partnered with the VEE Corporation to host pre-show parties before Sesame Street Live performances on O'ahu and Maui. PBS Hawai'i's youngest viewers gathered for activities, including a Cookie Monster cookie toss, build-your-own Sesame Street character headbands and delicious cupcake creations.

---

**Celebrating 50 Years with Songs  
of Aloha (October 5, 2015)**

---

PBS Hawai'i reprised this historic show to commemorate 50 years of public television in Hawai'i. This was a pledge of support program with live breaks, co-hosted by Leslie Wilcox, and Robert and Roland Cazimero. The live show featured guests Aaron Mahi, Amy Hanaiali'i and producer Stephen Reed.

---

**Keiki Club Costume Party  
(October 31, 2015)**

---

The PBS Hawai'i Keiki Club held its annual costume party in October. PBS Hawai'i's youngest viewers gathered in the studio for the festivities – make-your-own puppet pals, creative cookie designs and face painting, to name a few. After an interactive presentation by Mad Science of Hawai'i, children were ushered into a meet-and-greet with the problem-solving duo **Peg + Cat**.



Pictured right:

*Afternoon Tea with Downton Abbey  
historical advisor Alastair Bruce*



## Keiki Con (Nov. 7, 2015)

PBS Hawai'i took Peg + Cat to Keiki Con, a community event for kids hosted by the Mililani Town Association. In addition to meet-and-greets with Peg + Cat, children crafted Clifford the Big Red Dog ears alongside PBS Hawai'i staff and volunteers. Families received PBS Hawai'i water bottles and learned about PBS Hawai'i's educational children's programs.

## Afternoon Tea with Alastair Bruce (November 29, 2015)

About 100 local **Downton Abbey** supporters helped sell out an afternoon tea event at the Halekulani, a station fundraiser. After enjoying afternoon tea, Downton Abbey historical advisor Alastair Bruce spoke on the time period portrayed and shared stories from the set.

## Downton Abbey Season 6 Premiere Screenings (December 10, 2015 – O'ahu; December 28, 2015 – Maui)

PBS Hawai'i worked with Consolidated Theatres at Ward Center to host a free public screening of the Downton Abbey Season 6 premiere episode. Susan Bendon, a PBS Hawai'i Board member, organized a free screening of the premiere episode at Seabury Hall on Maui. A total of about 150 people attended both screenings.

## Downton Abbey Series Finale Screening (March 6, 2016)

For six seasons, Downton Abbey on Masterpiece captivated viewers with the fictional story of the Crawley family. To help celebrate the end of the series, 91 donors and business supporters enjoyed a special cocktail reception with Downton Abbey-inspired food and drinks.

Pictured right:

*Screening of the Ken Burns film, Jackie Robinson, at Palama Settlement in Honolulu*



---

### Free Screening of Ken Burns' Jackie Robinson (April 6, 2016)

---

PBS Hawai'i hosted a free public preview of Ken Burns' film on baseball legend Jackie Robinson at Palama Settlement, where Robinson stayed in 1941. An audience discussion followed the screening. NAACP Hawai'i President Alphonso Braggs, civil rights activist Faye Kennedy and retired sportswriter Jim Becker were among the guests who discussed Robinson's athleticism and legacy, and race relations.

---

### Parent-Child Fair (April 9, 2016)

---

PBS Hawai'i participated once more in Kaua'i's Parent-Child Fair, hosting a craft table and informing parents about educational children's programs on PBS Hawai'i. Kids had fun making their own "Tortugas," inspired by the explorative turtle ship from **Wild Kratts**, alongside PBS Hawai'i Board Member Joy Koerte.

---

### Oceanfest (June 4, 2016)

---

PBS Hawai'i staffers Stephanie Joe and Alison Crabb coordinated an arts-and-crafts table at O'ahu's North Shore Ocean Fest, a community event dedicated to ocean education. Kids crowded around PBS Hawai'i's table to create their own honu (sea turtles), while parents learned about PBS Hawai'i's educational children's programs.

---

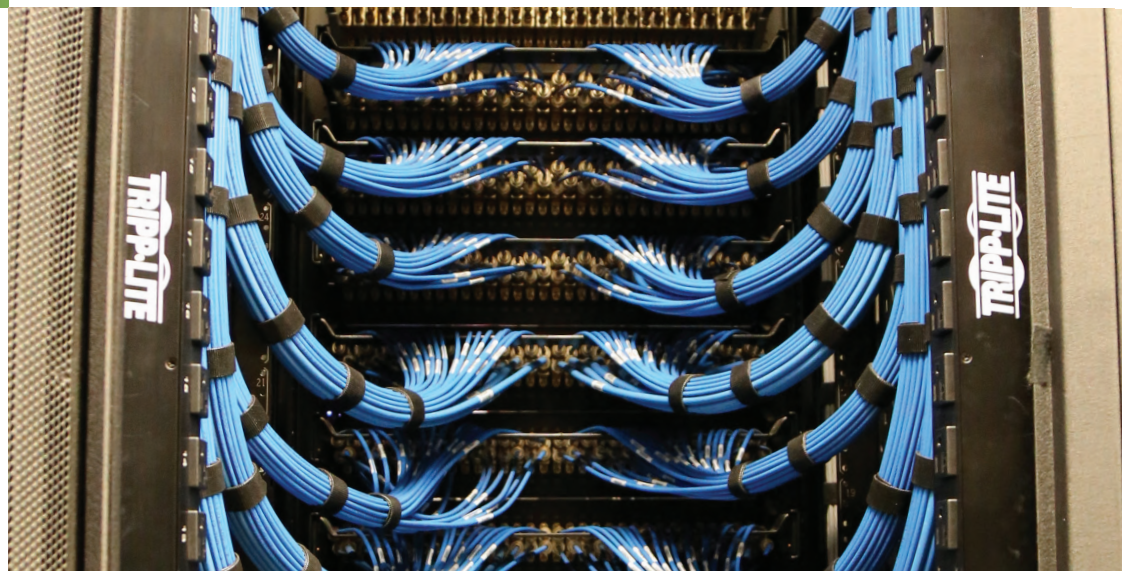
### Meet the Neighbors (June 8, 2016)

---

PBS Hawai'i invited neighboring Sand Island businesses to take a tour of our new home. PBS Hawai'i board members hosted, while staff members guided individuals and groups from 40 neighboring business on tours of the station.

Pictured right:

*Within PBS Hawai'i's new home, approximately 32.5 miles of cabling allow us to distribute media content statewide. Laid out, our cabling would roughly span the width of Moloka'i!*



## Progress in Engineering

### Shared Content Distribution with Joint Master Control

PBS Hawai'i joined fellow PBS stations in a Joint Master Control Center this year. Shortly after midnight on May 14, 2016, PBS Hawai'i began broadcasting from our new home at 315 Sand Island Access Road via New York Centralcast. Our hub is located in Syracuse, New York, with PBS Hawai'i being the most geographically distant spoke station.

PBS Hawai'i sends a programming schedule to Centralcast, which then delivers a complete broadcast signal that we distribute to our transmitters, cable and telecom providers.

The use of Joint Master Control reduces infrastructure costs, since resources are shared among television stations. It also includes 24-hour monitoring of our three broadcast channels. Media assets can be transferred between stations, if desired.





**Pictured right:**

*Our master control inside The Clarence T.C. Ching Campus is where engineers monitor programming. We are linked to a central master control hub in Syracuse, New York.*



---

## **Technology at PBS Hawai'i's New Home**

---

In the second-floor Harry and Jeanette Weinberg Learning Zone, two video walls – our Digital Mosaic Wall and Social Media Wall – are available to display media from our broadcast channels, station servers, satellite feeds or social media via computers. These video walls provide an opportunity for visitors to learn about PBS Hawai'i and our programming at a glance. The Digital Mosaic Wall offers a way for our HIKI NŌ teachers and students to display presentations or video during workshops, with the ability to connect to laptops or tablets.

The equipment room at PBS Hawai'i's new home employs a cold aisle containment air conditioning system. This type of air conditioning is more energy efficient, providing more precise cooling.

The power for PBS Hawai'i is protected by an uninterruptible power supply and generator to ensure the technical core is not affected by electrical outages. This also reduces the possibility of costly equipment failures due to power fluctuations. We did not have this safeguard at our previous facility.



## Statewide Board of Directors



Robbie Alm  
Chair



Jason Fujimoto  
Vice Chair



Bettina Mehnert  
Secretary



Kent Tsukamoto  
Treasurer



Muriel Anderson



Susan Bendon



Jodi Endo Chai



Keola Donaghy



Matthew Emerson



Jake Fergus



Joanne Grimes



Gayle Harimoto



Jason Haruki



Charlyn Honda Masini



Noelani Kalipi



Darren Kimura



Jean Kiyabu



Joy Miura Koerte



Kamani Kuala'au



Mary Ann Manahan



David McEwan



Cameron Nekota



Aaron Salā



Ka'iulani Sodaro



L. Candy Suiso



Huy Vo



Bruce Voss



## Statewide Community Advisory Board



Karen Knudsen  
Chair  
O'ahu



Chuck Boller  
O'ahu



Dennis Bunda  
O'ahu



Lei Kihoi Dunne  
Hawaii'i Island



Jason Fujinaka  
Kaua'i



Kainoa Horcajo  
Maui



Dr. Shawn  
Kanaiaupuni  
O'ahu



Cheryl Kauhane  
Lupenui  
O'ahu



Corrina Moefu  
O'ahu



Les Murashige  
O'ahu





## Management



Leslie Wilcox  
President and CEO



Karen Yamamoto  
Senior Vice President  
and CFO



Linda Brock  
Chief Content Officer



Jason Suapaia  
Vice President  
Creative Services



Cheryl Oncea  
Vice President  
Advancement



Liberty Peralta  
Vice President  
Communications



Robert Pennybacker  
Director of  
Learning Initiatives  
Executive Producer  
HIKI NŌ



Tina Yamaki  
Director of  
Business Support



Christina Kanemoto  
Sumida  
Director of  
Individual Support



John Nakahira  
Chief Engineer



## Foundation Supporters

---

- AC Kobayashi Family Foundation
- Alaska Airlines Foundation
- Annie Sinclair Knudsen Fund of the Hawaii Community Foundation
- Armstrong Foundation
- Atherton Family Foundation
- Bank of Hawaii Foundation
- Bendon Family Foundation
- Cades Foundation
- Castiglione Casauria Foundation
- Central Pacific Bank Foundation
- Change Happens Foundation
- The Clarence T.C. Ching Foundation
- Cooke Foundation
- Cooper Family Foundation
- David McEwan, M.D. Charitable Fund of the Hawaii Community Foundation
- Denis and Robert Wong Foundation
- Dr. and Mrs. L Q Pang Foundation
- Frank M. and Gertrude R. Doyle Foundation
- Erdman Family Foundation
- First Hawaiian Bank Foundation
- First Insurance Company of Hawaii Charitable Foundation
- Freeman Family Fund of the Hawaii Community Foundation
- Friends of Hawaii Charities, Inc.
- Fujimoto Foundation
- George Mason Fund of the Hawaii Community Foundation
- Grove Farm Company Foundation
- Harold K. L. Castle Foundation
- Hawaii Community Foundation
- Haynes Family Fund of the Hawaii Community Foundation
- Hazel H. Takumi Foundation
- Hung Wo and Elizabeth Lau Ching Foundation
- J. Watumull Fund
- Jack and Marie Lord Fund of the Hawaii Community Foundation
- John and Clifford Mirikitani Foundation
- John and Janet Sherman Family Fund
- John M. Simpson Foundation
- John R. Halligan Foundation
- Joseph and Leonore Wee Fund of the Hawaii Community Foundation
- Koaniani Fund of the Hawaii Community Foundation
- Kosasa Foundation
- Larry and Beatrice Ching Foundation
- LGA Family Foundation
- Makana Aloha Foundation
- Mary Wagner Fund of the Hawaii Community Foundation
- Matson Foundation
- Maui Economic Development Board - Ke Alahele Education Fund
- Moonglow Fund of the Hawaii Community Foundation
- Lloyd Moore Foundation
- O. L. Moore Foundation
- Ohuokalani Charitable Foundation
- Peter P. Jennings Fund
- Prisanlee Fund of the Hawaii Community Foundation
- REAP Foundation
- Richard Smart Fund of the Hawaii Community Foundation
- Ronald E. and Ivy L. Timpe Fund of the Oregon Community Foundation
- S. Saito Family Charitable Fund
- S. W. Wilcox Trust
- Sam and Mary Castle Foundation
- Servco Foundation
- Sherman Family Foundation
- Sidney Stern Memorial Trust
- Steve and Gloria Gainsley Fund of the Hawaii Community Foundation
- Stupski Family Fund of the Hawaii Community Foundation
- Tateuchi Foundation
- Thomas and Elizabeth Brodhead Foundation
- Touch of Grace Fund of the Hawaii Community Foundation, A
- Tsuha Foundation
- Wade and Harue McVay Fund of the Hawaii Community Foundation
- Wallace Alexander Gerbode Foundation
- Watumull Fund
- Zilber Family Foundation
- Zukerkorn Foundation



## Business Supporters

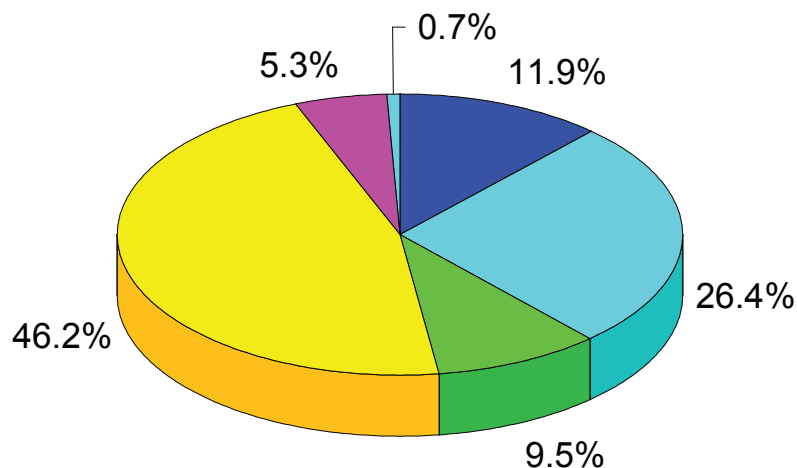
---

- 7-Eleven
- Alexander & Baldwin, Inc.
- Aloha Petroleum
- American Savings Bank
- Aqua Hotels and Resorts
- Armstrong Builders
- Bank of Hawaii
- Cades Schutte LLP
- Carlsmith Ball LLP
- Honolulu Civil Beat
- Cronin, Fried, Sekiya, Kekina & Fairbanks
- Cumming Corporation
- Elite Parking Services
- First Hawaiian Bank
- First Insurance Company of Hawaii
- Hanalani Schools
- Hawaii Association for the Education of Young Children
- Hawaii Credit Union League
- Hawaii Government Employees Association
- Hawaii Medical Service Association
- Hawaii State Teachers Association
- Hawaiian Airlines, Inc.
- Hawaiian Telcom
- HICentral MLS
- Hilton Hawaiian Village Waikiki Beach Resort
- Honolulu Board of REALTORS®
- HouseMart
- Hyatt Regency Waikiki Beach Resort and Spa
- Ice Palace Hawaii
- Island Air
- Jaco Rehab LLC
- Keiki Care Center of Hawaii, Inc.
- Love's Bakery
- Marian's Catering
- Maryknoll School
- Matson, Inc.
- My Gym Family Fitness Center
- Nan, Inc.
- Ohana Health Plan
- Our Kakaako
- Pearl Harbor Federal Credit Union
- Pigtails & Crewcuts
- Pūlama Lāna'i
- R. M. Towill Corporation
- RT Hawaii Restaurants Inc.
- Saint Marianne Cope Preschool
- Servco Pacific Inc.
- Stepping Stones Academy
- The Plaza Assisted Living
- The St. Andrew's Schools
- Tutu & Me Traveling Preschool
- University of Hawai'i Cancer Center
- University of Hawai'i Community Colleges
- University of Hawai'i Professional Assembly
- Waimea Valley
- Wee Play & Learn





## Financial Snapshot



- Individual Viewers and Foundations
- Businesses
- Federal Funding through the Corporation for Public Broadcasting
- Capital Campaign
- Restricted Grants
- Miscellaneous

	FY 2016
Individual Viewers and Foundations	1,870,889
Businesses	4,154,569
Federal Funding through the Corporation for Public Broadcasting	1,496,941
Capital Campaign	7,269,777
Restricted Grants	831,416
Miscellaneous	115,404
	<u>15,738,996</u>

Pictured right:

**Nature Cat** Image courtesy of NATURE CAT and associated characters, trademarks and design elements are owned by Spiffy Entertainment, LLC © 2015 Spiffy Entertainment, LLC, all rights reserved.



## Programming on PBS Hawai'i

### Children's Programming

Angelina Ballerina (Weekly)  
 Arthur (Daily)  
 Barney & Friends (Weekly)  
 Bob The Builder (Weekly)  
 Caillou (Daily)  
 Clifford The Big Red Dog (Daily)  
 Curious George (Daily)  
 Cyberchase (Weekly)  
 Daniel Tiger's Neighborhood (Daily)  
 Dinosaur Train (Daily)  
 Electric Company (Weekly)  
 Martha Speaks (Daily)  
 Mister Rogers' Neighborhood (Weekly)  
 Nature Cat (Daily)  
 Odd Squad (Daily)  
 Peg + Cat (Daily)  
 Ready Jet Go!  
 Scigirls (Weekly)  
 Sesame Street (Daily)  
 Sid The Science Kid (Weekly)  
 Super Why! (Daily)  
 The Cat In The Hat Knows A Lot About That! (Daily)  
 Thomas & Friends (Daily)  
 Wild Kratts (Daily)  
 Wordgirl (Daily)  
 Wordworld (Weekly)



Pictured right:

***Finding Your Roots*** Host Henry Louis Gates is shown here with guest Donna Brazile.

*Photo courtesy of Ark Media*



## Culture and Arts

Artisan x Designer (Series)	Queen's Garden
Becoming An Artist	Shakespeare's Tomb
Ceramic Treasures	Soul Of A Banquet
A Chef's Life (Series)	Story Of Women And Art (Series)
Cool Japan (Series)	Tokyo Eye 2020 (Series)
Core Kyoto (Series)	Two Feet From The Audience
Craft In America (Series)	Well Read (Series)
Craftsman's Legacy (Series)	World Heritage Wonders (Series)
David Bowie: Five Years	
Decoding Ancient Chinese Gardens	
Design Talks Plus (Series)	
Fake Or Fortune? (Series)	
Finding Your Roots (Series)	
Genealogy Roadshow (Series)	
Great Houses With Julian Fellowes (Series)	
Great Museums (Series)	
Hidden Legacy: Japanese Traditional Performing Arts	
I'll Have What Phil's Having (Series)	
James Mcneill Whistler And The Case For Beauty	
J-Architect (Series)	
J-Flicks (Series)	
Lidia Celebrates America	
Music For Life: The Story Of New Horizons	
Music Voyager (Series)	
National Gallery	
Off The Menu: Asian America	
Pulling Out All The Stops	





Pictured right:

***Call the Midwife***

*Photo courtesy of Red Productions Ltd 2015*



## Drama

Agatha Christie's Poirot (Series)  
 Arthur & George On Masterpiece (Series)  
 Call The Midwife (Series)  
 Dancing On The Edge (Series)  
 Downton Abbey On Masterpiece (Series)  
 Endeavour On Masterpiece (Series)  
 Foyle's War (Series)  
 Grantchester Season 2 On Masterpiece (Series)  
 Home Fires On Masterpiece (Series)  
 Indian Summers On Masterpiece (Series)  
 Last Tango In Halifax (Series)  
 Mercy Street (Series)  
 Mr. Selfridge Season 4 On Masterpiece (Series)  
 Murder On The Home Front (Series)  
 Poldark On Masterpiece (Series)  
 Sherlock On Masterpiece (Series)  
 The Crimson Field (Series)  
 The Forsyte Saga (Series)  
 The Guilty (Series)  
 The Making Of A Lady  
 The Tunnel (Series)  
 The Widower (Series)  
 Vicious (Series)  
 Wallander Season 4 On Masterpiece (Series)

Pictured right:

**Robin Williams Remembered**

Photo courtesy of ABC Photographer:  
Gerald B. Wolfe

Pictured far right:

**POV The Look of Silence**

Photo courtesy of Drafthouse Films and Participant Media



## Documentaries

American Masters (Series)  
At Home With Venetia In Kyoto (Series)  
Barefoot College  
Black Panthers: Vanguard Of The Revolution  
Bridging The Divide: Tom Bradley And The Politics  
Buried History With Mark Walberg  
Changing Season: On The Masumoto Family Farm  
Chinese Couplets  
E.O. Wilson - Of Ants And Men  
Education Of Harvey Gantt  
Emery Blagdon And His Healing Machine  
Filipino American Lives (Series)  
Giap's Last Day At The Ironing Board Factory  
Great Gear (Series)  
Growing Up Gambling  
Imagine-Nation  
In Defense Of Food  
In Their Own Words  
Independent Lens (Series)  
Invisible Women: Forgotten Artists Of Florence  
Iwo Jima: From Combat To Comrades  
Jackie Robinson  
Japanese American Lives (Series)  
Jazz (Series)  
Jerusalem: Center Of The World  
Language Matters With Bob Holman  
On Two Fronts: Latinos & Vietnam  
Our American Family: The Furutas  
POV (Series)  
Rising (Series)

Secrets Of Her Majesty's Secret Service  
Secrets Of Saint John Paul  
Secrets Of Scotland Yard  
Secrets Of Selfridges  
Secrets Of The Dead (Series)  
Secrets Of The Tower Of London  
Secrets Of Underground London  
Secrets Of Westminster  
Shelter Me (Series)  
Smokin' Fish  
Stateless  
Supreme Skills! (Series)  
The National Mall: America's Front Yard  
This Is My Home Now  
Tree Safari: The Koa Connection  
W.S. Merwin: To Plant A Tree  
Workin' Man Blues  
Xmas Without China  
Secrets of the Dead  
Secrets of the Tower Of London  
Secrets of Underground London  
Secrets of Westminster  
Shift Change  
The Singing Revolution  
Super Skyscrapers  
Superheroes: A Never-Ending Battle  
Supreme Skills (Series)  
Titanic: Band of Courage  
To Breathe as One  
Tree Safari: The Koa Connection  
Trial by Fire: Lives Re-Forged  
Voces on PBS (Series)  
Who Cares About Kelsey?  
Wilderness: The Great Debate  
Xmas Without China  
Yunjin Brocade Master



Pictured right:

**50 Years with Peter, Paul and Mary**

*Photo courtesy of Robert Corwin*



## Entertainment - General

50 Years With Peter, Paul And Mary  
 60s & 70s Slow Songs  
 60s Girl Grooves  
 60s Pop, Rock & Soul  
 Ain't It Cool With Harry Knowles (Series)  
 Antiques Roadshow (Series)  
 Bafta Celebrates Downton Abbey  
 Best Of 50s Pop  
 Best Of The Boston Pops  
 Carpenters: Close To You  
 Christmas At Belmont  
 Christmas On The Danube  
 Christmas With The Mormon Tabernacle Choir  
 Classical Rewind 2  
 Country Pop Legends  
 Dave Clark Five - Glad All Over  
 Eddie Murphy: The Mark Twain Prize  
 Favorite Love Songs  
 Grand Mercer Christmas  
 Great Broadway Musical Moments From  
     The Ed Sullivan  
 John Denver: Country Boy  
 Mary Tyler Moore: A Celebration  
 Moments To Remember  
 My Yearbook: 1960-1963  
 Red Rock Serenade  
 Rock Rewind 1965-1967  
 Rock, Pop And Doo Wop  
 Sister Acts  
 Songbook Standards: As Time Goes By  
 This Land Is Your Land





Pictured right:

**First Peoples**

*Photo courtesy of Graham Bartholomew /  
Wall to Wall Media*



---

## History and Geography

---

10 Buildings That Changed America  
 10 Homes That Changed America  
 10 Parks That Changed America  
 10 Towns That Changed America  
 1913: Seeds Of Conflict  
 1962 World's Fair: When Seattle Invented  
     The Future  
 Al Capone: Icon  
 American Experience (Series)  
 Debt Of Honor: Disabled Veterans In  
     American History  
 Dick Cavett's Vietnam  
 Fidel Castro Tapes  
 First Peoples (Series)  
 Four-Four-Two: F Company At War  
 Jfk & Lbj: A Time For Greatness  
 Navy Seals - Their Untold Story  
 Nazi Mega Weapons (Series)  
 The Bomb  
 The Civil War (Series)  
 The Draft  
 The Greeks (Series)  
 The National Parks: America's Best Idea (Series)

Pictured right:

***Family Ingredients***

*Photo courtesy of Renea Veneri Stewart*



## Local and Regional Productions

A Place In The Middle  
 Biography Hawai'i (Series)  
 Breadfruit & Open Spaces  
 Canefield Songs: Holehole Bushi  
 Dream Big: Nanakuli At The Fringe  
 E Haku Inoa: To Weave A Name  
 Even Though The Whole World Is Burning  
 Family Ingredients (Series)  
 Fishing Pono  
 Haleakala: A Trek For Dignity  
 Hawaiian Masterpieces: Ka Hana Kapa  
 HIKI NŌ (Series)  
 HIKI NŌ Can Do Festival 2015  
 Ike - Knowledge Is Everywhere  
 Insights On PBS Hawai'i (Series)  
 Jimmy Borges: Faced It All  
 Keola Beamer: Malama Ko Aloha (Keep Your Love)  
 Living Your Dying  
 Long Story Short With Leslie Wilcox (Series)  
 Ma Ka Malu Ali'i: The Legacy Of Hawai'i's Ali'i  
 Na Mele (Series)  
 Ohta-San: Virtuosity And Legacy  
 Olympic Quest: Teshya And Clarissa  
 Pacific Heartbeat (Series)  
 PBS Hawai'i: Celebrating 50 Years With Songs  
     Of Aloha  
 Songs Of Joy: A PBS Hawai'i Holiday Celebration  
 Standing On Sacred Ground (Series)  
 The Land Of Eb  
 The Paho Flow  
 The Quietest Place On Earth  
 Under A Jarvis Moon



Pictured right:

**PBS NewsHour**

*Photo courtesy of Robert Severi*



## News and Public Affairs

America After Charleston  
 America By The Numbers With Maria Hinojosa (Weekly)  
 Asia Insight (Weekly)  
 BBC World News (Weekdays)  
 Biz Buzz Japan (Weekly)  
 Caring For Mom & Dad  
 Charlie Rose - The Week (Weekly)  
 Charlie Rose (Weekdays)  
 Dropping Back In (Weekly)  
 Frontline (Weekly)  
 McLaughlin Group (Weekly)  
 NHK Newsline (Weekdays)  
 Nightly Business Report (Weekdays)  
 Open Mind (Weekly)  
 PBS Democratic Presidential Debate 2016  
 PBS Newshour (Weekdays)  
 PBS Newshour Weekend  
 Point Taken (Weekly)  
 Questions For President Obama:  
     A PBS Newshour Special Report  
 Religion & Ethics Newsweekly (Weekly)  
 TED Talks  
 To The Contrary With Bonnie Erbe (Weekly)  
 Washington Week With Gwen Ifill (Weekly)



Pictured right:

**Great Performances at The MET: Cavalleria**

*Rusticana/Pagliacci Photo courtesy of Cory*

*Weaver/Metropolitan Opera*

Pictured far right:

**Transatlantic Sessions**

*Photo courtesy of John MacKinnon Images*



**Performance - Classical**

Great Performances (Series)  
Great Performances At The Met (Series)  
Live From Lincoln Center (Series)  
Ode To Joy: Beethoven's Symphony No. 9  
Time For Three In Concert  
Virtuosity: The Cliburn

**Performance - Contemporary**

A Capitol Fourth  
ACL Presents: Americana Music Festival  
Alice's Restaurant 50th Anniversary  
Concert  
All ATX: Austin Gets Psychedelic  
Austin City Limits (Series)  
Bluegrass Underground Special  
First You Dream: The Music Of  
Kander & Ebb  
Front And Center (Series)  
Great Performances (Series)  
Il Volo Buon Natale  
Il Volo: Live From Pompeii  
In Performance At The White House (Series)  
Jackie Evancho: Awakening  
Jazz And The Philharmonic  
Joe Bonamassa: Muddy Wolf At Red Rocks  
Josh Groban: Stages Live  
Live From Lincoln Center (Series)  
Mannheim Steamroller 30/40 Live  
Michael Feinstein New Year's Eve At The  
Rainbow Room  
Onstage In America: Honky  
Simon & Garfunkel: The Concert In  
Central Park  
Tenors: Under One Sky  
The Midtown Men Live In Concert!  
The National Memorial Day Concert  
The Transatlantic Sessions  
Tribute To Toussaint  
Unity: The Latin Tribute To Michael  
Jackson  
Willie Nelson: The Library Of Congress  
Gershwin Prize  
Xerox Rochester International Jazz  
Festival (Series)  
Yanni Live At The Great Pyramids



Pictured right:

**NOVA (Great Human Odyssey)**

*Photo courtesy of Adam Ravetch*



## Science, Nature and Health

9 Months That Made You (Series)  
 A Year In Space  
 Age Wise (Series)  
 Big Blue Live (Series)  
 Earth A New Wild (Series)  
 Earth's Natural Wonders (Series)  
 Ecosense For Living (Series)  
 Genius By Stephen Hawking (Series)  
 Get The Math 2.0  
 Gorongosa Park: Rebirth Of Paradise  
 Human Face Of Big Data  
 Humanity From Space  
 Leopards Among Us  
 Life On The Reef (Series)  
 Nature (Series)  
 Nova (Series)  
 Operation Wild (Series)  
 Particle Fever  
 Ride The Tiger  
 Rise Of The Black Pharaohs  
 Science View (Series)  
 Second Opinion (Series)  
 Supernature: Wild Flyers (Series)  
 The Brain With David Eagleman (Series)  
 The Great Plains: America's Lingerin Wild  
 The Great Polar Bear Feast  
 The Mystery Of Matter: Search For The Elements  
 The New Environmentalists (Series)  
 Time Scanners (Series)  
 To Catch A Comet  
 Uranium: Twisting The Dragon's Tail (Series)

Pictured right:

***The Great British Baking Show***

*Photo courtesy of © Mark Bourdillion/  
Love Productions*



## Travel, cooking and DIY

American Woodshop (Series)

America's Test Kitchen From Cook's

Illustrated (Series)

Ask This Old House (Series)

Best Of The Joy Of Painting (Series)

Burt Wolf: Travels & Traditions (Series)

Cook's Country (Series)

Curious Traveler (Series)

Delicious Japan (Series)

Dining With The Chef (Series)

Dream Of Italy (Series)

Few Good Pie Places

Few Great Bakeries

Globe Trekker (Series)

Great British Baking Show (Series)

Jacques Pepin: Heart & Soul (Series)

Joseph Rosendo's Travelscope (Series)

Journeys In Japan (Series)

Landscapes Through Time With

David Dunlop (Series)

Lidia's Kitchen (Series)

Lucky Chow (Series)

Lunch On! (Series)

Martha Bakes (Series)

Martha Stewart's Cooking School

(Series)

Mexico: One Plate At A Time With

Rick Bayless (Series)

Motorweek (Series)

Moveable Feast With Fine Cooking  
(Series)

Rick Steves' Europe (Series)

Rough Cut: Woodworking With

Tommy Mac (Series)

Sara's Weeknight Meals (Series)

Simply Ming (Series)

The Mind Of A Chef (Series)

This Old House (Series)

Woodsmith Shop (Series)

Woodwright's Shop (Series) Sit and Be Fit  
(Series)

T'ai Chi: Health & Happiness with David-  
Dorian Ross

This Old House (Series)

Tokyo Eye 2020 (Series)

Victory Garden's Ediblefeast (Series)

Woodsmith Shop (Series)

The Woodwright's Shop (Series)